

4

3

2

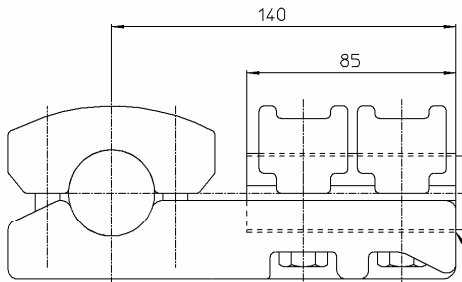
1

THIS DRAWING IS UNPUBLISHED
DIFFUSION RESTREINTE
COPYRIGHT 2011 by Tyco Electronics Corporation

RELEASED FOR PUBLICATION
LIBRE A LA DIFFUSION
2011
ALL RIGHTS RESERVED.
Tous droits reserves

LOC - DIST -

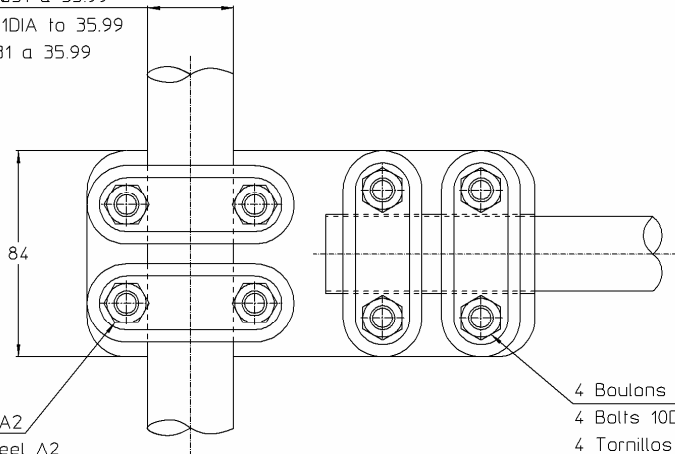
REVISIONS				
P	LTR REV	DESCRIPTION MODIFICATIONS	DATE	APVD APPR
B		E000-0089-05	24-Feb-05	EN LR
C		UPDATED DRAWING	19-Apr-13	PG -



Borne cuivre ø30
Copper terminal 30DIA
Borne de Cobre ø30

Fourrure Aluminium/cuivre ø32x30
Sleeve Alu alloy/copper 32DIAx30
Virola de aluminio/cobre ø32x30

Cable ou tube ø31 à 35.99
Cable or tube 31DIA to 35.99
Cable o tubo ø31 a 35.99



37 Nm { 4 Boulons ø10 acier inox A2
4 Bolts 10DIA stainless steel A2
4 Tornillos ø10 acero inoxidable A2

4 Boulons ø10 acier inox A2
4 Bolts 10DIA stainless steel A2
4 Tornillos ø10 acero inoxidable A2 } 37 Nm

THIS DRAWING IS A CONTROLLED DOCUMENT. <small>LE PLAN EST UN DOCUMENT CONTROLÉ PAR TYCO ELECTRONICS CORPORATION L'EST SUSCEPTIBLE D'ÊTRE REVISÉ POUR QU'IL Y AIT LA BIENNE REVISION CONTACTER LE SERVICE TECHNIQUE DE TYCO ELECTRONICS S.P.A. S.R.L. 10200 GENEVE-CHAMBERTIN FRANCE</small>		DWN /DESSINE NIVOIS 24-Feb-05	TE connectivity SIMEL PRODUCTS		
DIMENSIONS: mm		CHK/VERIFIE -			
TOLERANCES UNLESS OTHERWISE SPECIFIED PER TOLERANCES NON SPECIFIEES SECON - -		APVD/APPROUVE -	PRODUCT SPEC SPEC. PRODUIT 02BFC0031		RESTRICTED TO RESERVE A -
MATERIAL MATIERE -		FINISH FINITION -	APPLICATION SPEC SPEC. APPLICATION -	SCALE ECHELLE 1/2	
ITEM:		WEIGHT MASSE APPROX 1.3 Kg	SIZE FORMAT A3	CAGE CODE 00779	DRAWING NO No PLAN C=706820
CUSTOMER DRAWING /PLAN CLIENT			UNIQUEMENT POUR REFERENCE	SCALE ECHELLE 1/2	SHEET FEUILLE 1 OF DE 1